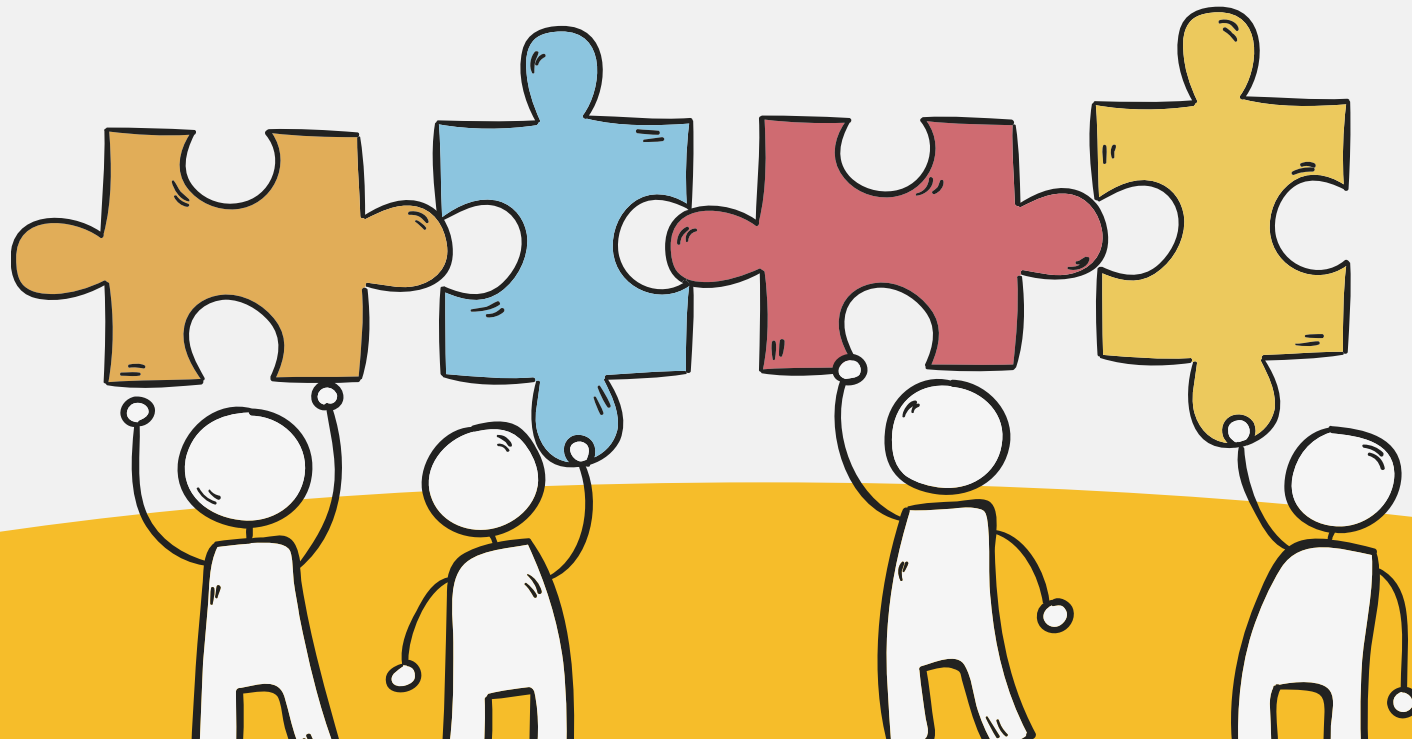


Elderly Health Care System in Taiwan

Reporters:

Huang, Li-Chiung Cheng, Mu-Chun



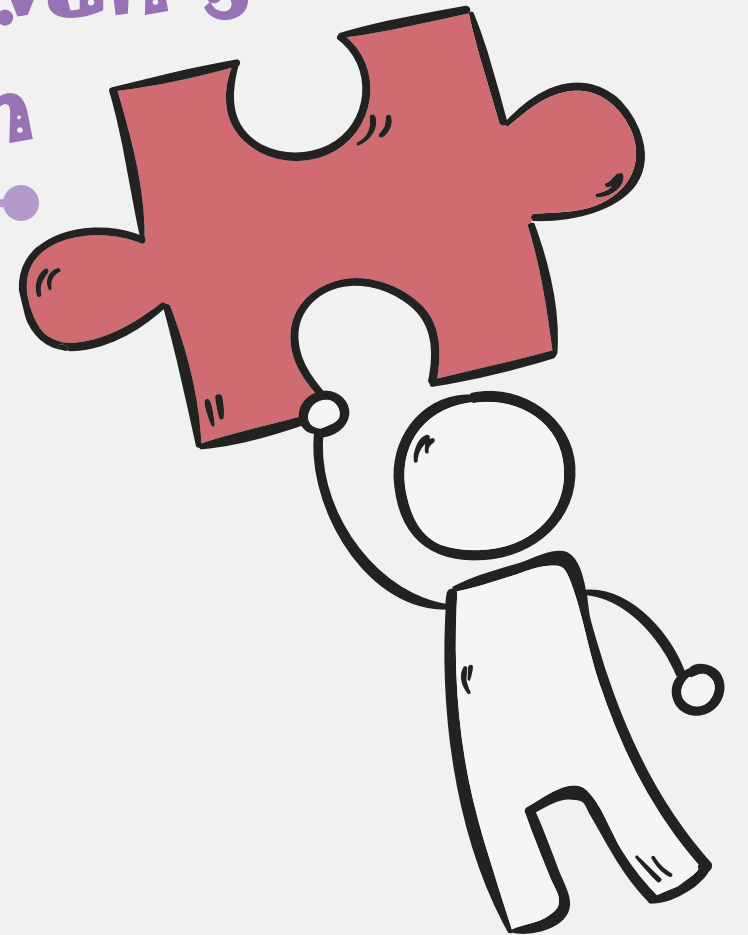


Outline

- 1 The Proportion of Taiwan's Elderly Population.
- 2 Healthy Welfare for Elderly.
- 3 Long-term care 2.0
- 4 Services
- 5 What We did during intern



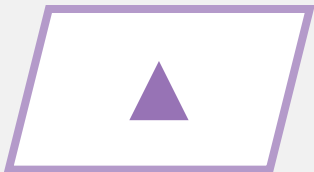
01 The Proportion of Taiwan's Elderly Population



Elderly Population



Elderly welfare legislation defines elderly as individuals who are **over 65 years old**.



Society:

Aging: More than **7%** of the population is over 65 years old.

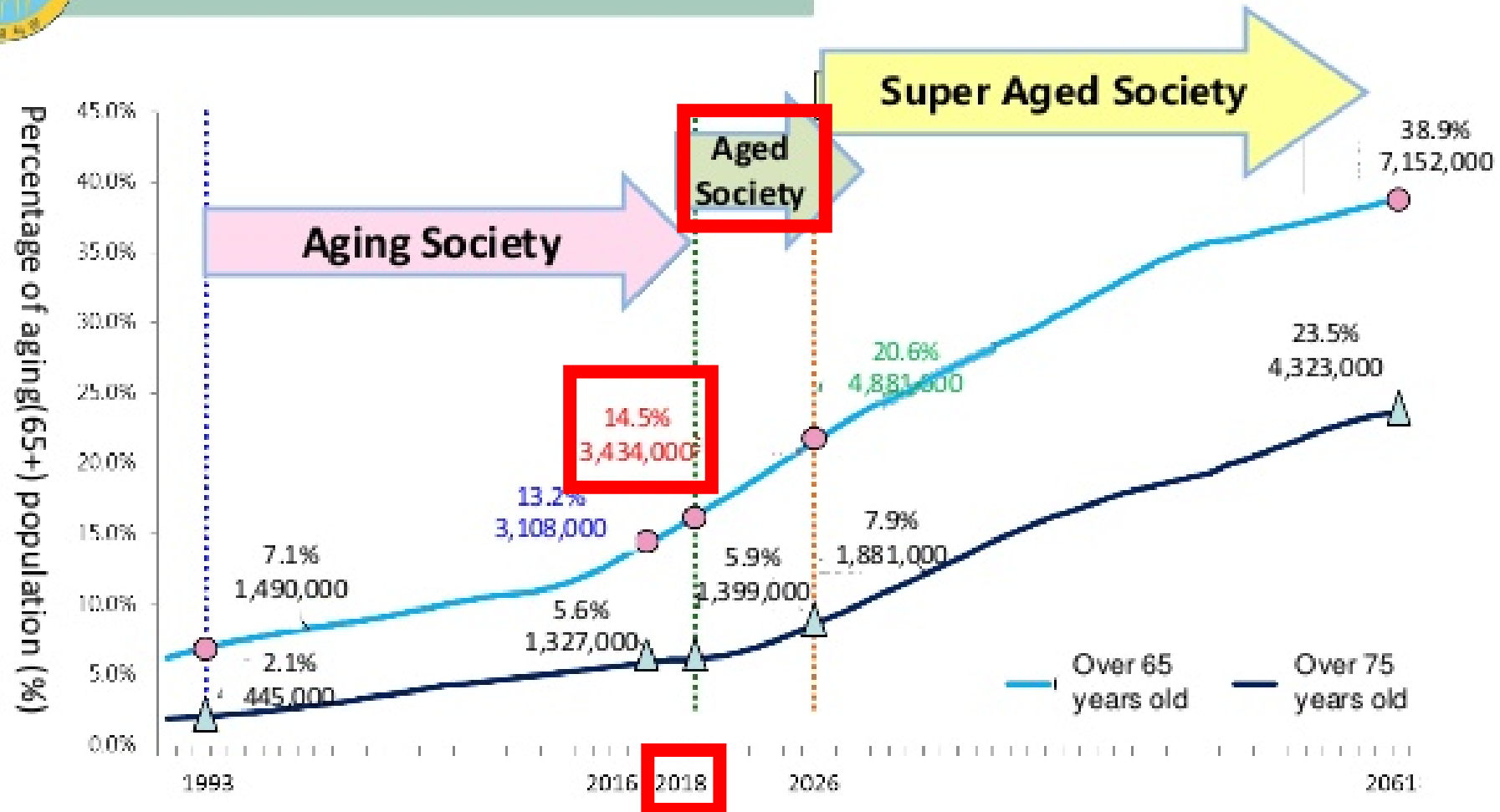
Aged: More than **14%** of the population is over 65 years old.

Super-aged: More than **20%** of the population is over 65 years old.

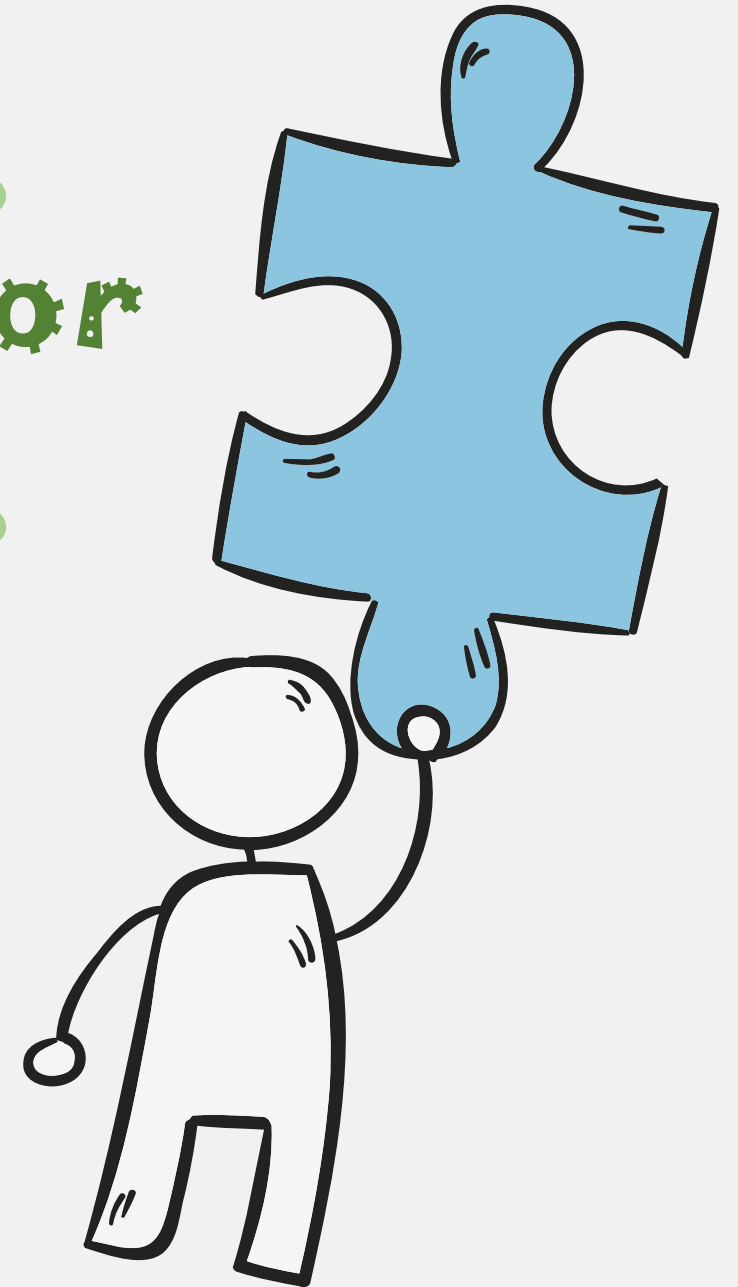
Elderly Population



Ministry of Health and Welfare



02 Healthy Welfare for Elderly



Healthy Welfare

- 1 Low&middle-income special caring allowance
- 2 Health care insurance support for elderly
- 3 Physical checkup(Free)
- 4 Making false teeth at public expense
- 5 **Long-term care 2.0**

03 Long-term care 2.0

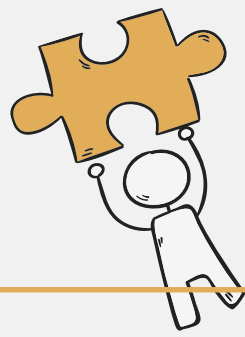
(1) Purpose

(2) What is it?

(3) For who?

(4) How does it work?

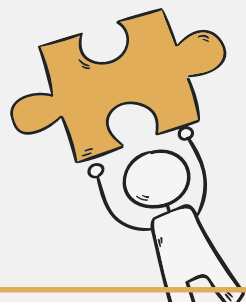




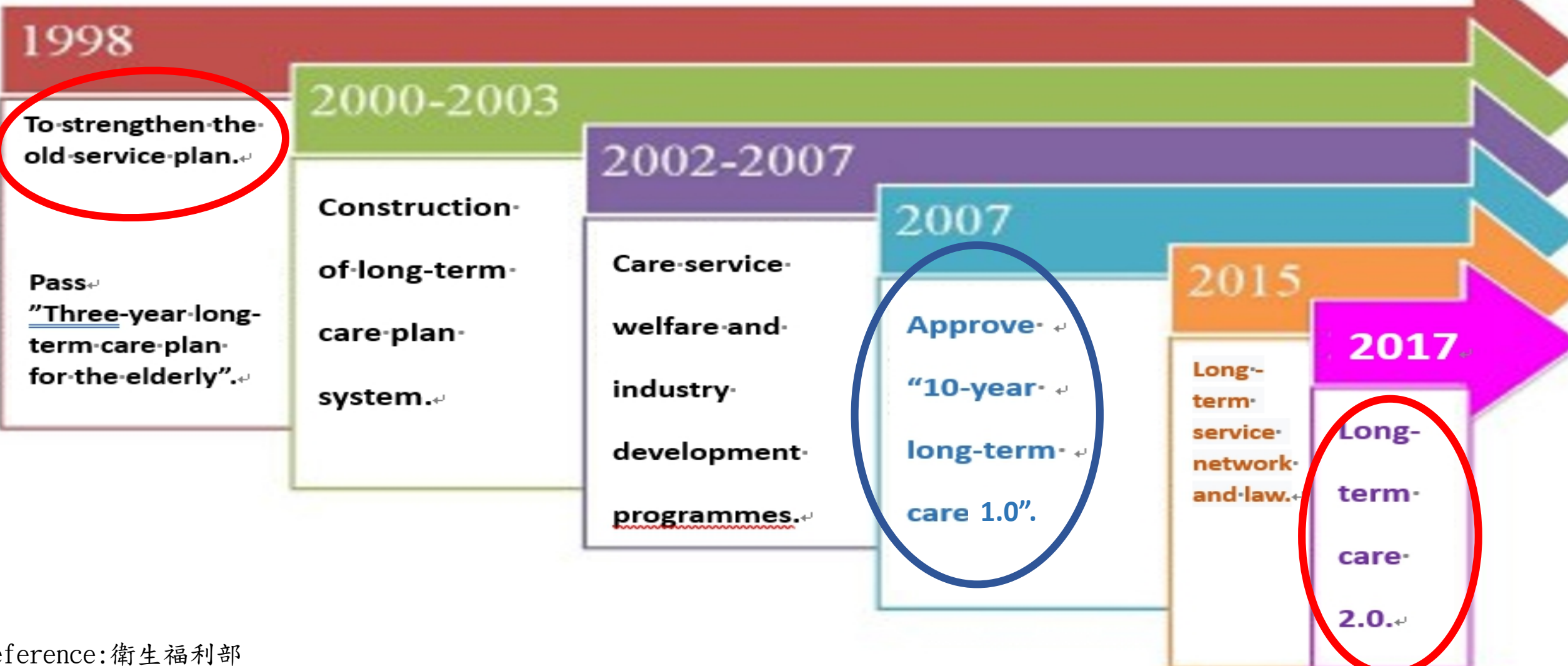
Purpose

☆ Purpose:

To satisfy the huge demand of long-term care in the future and reduce the heavy workload of the family.



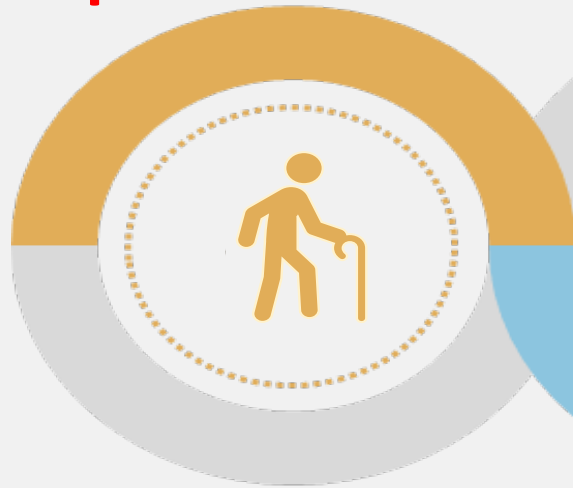
What is it?



For who?

After 2017 → Long-term care 2.0

50↑ years old
people with dementia



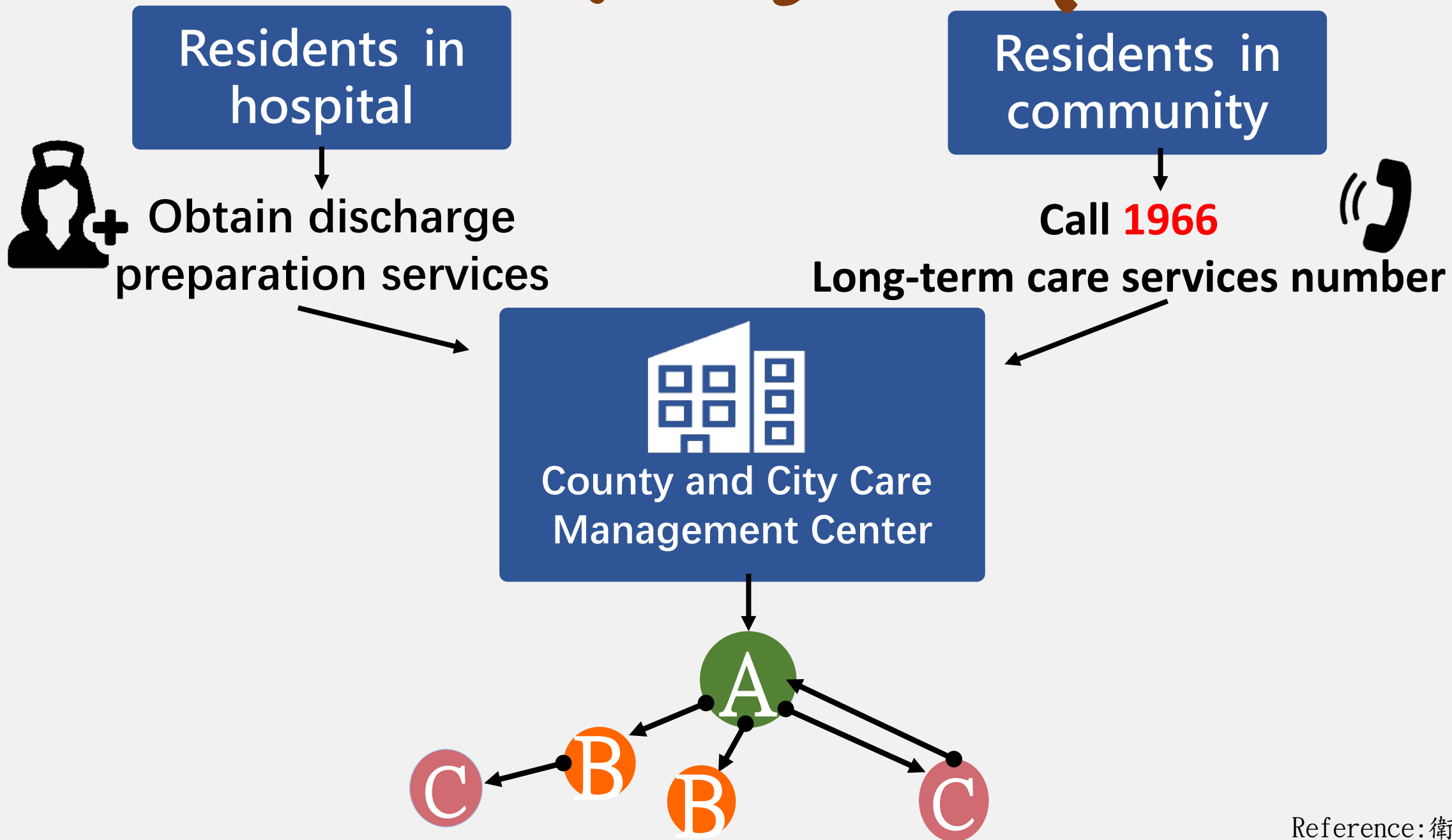
Old frailty and
disabled people



55↑ years old
the frail plainland
indigenous people

65↑ years old
frailty elders

How Does it Work?



About A, B & C



Community Integrated Service Center

- **Assess** what they need and get the resource to them.
- Provide B & C skill support and integration services.
- Home care.
- Day care.



Composite service center

- Institutional care.
- Community care.
- Home rehabilitation.
- Pick-Up service
- Food delivery
- Respite care

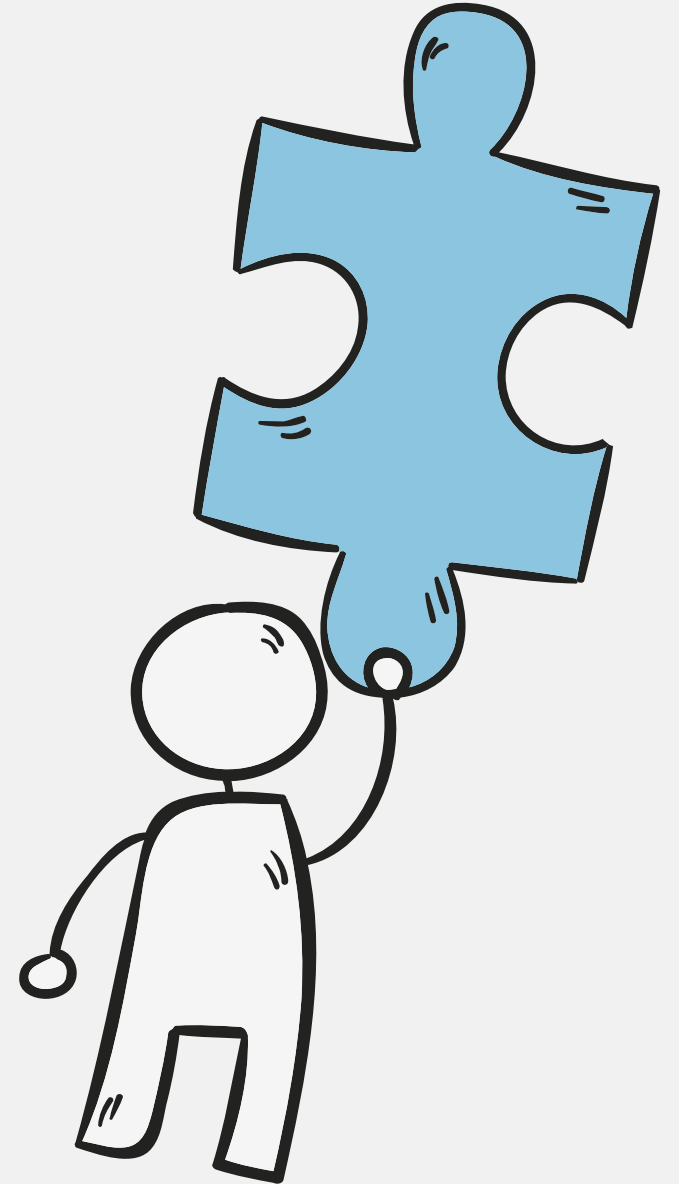


C station

- For health & sub-health residents.
- It is a place inside the community, so they can go here easily.
- Prevent frailty
- Health promote
- Eat meals together

04

Services





Services



There are **17** services that long-term care 2.0 offers, and we will introduce 8 services that elderly often use.

Services

- 1 Care service (including home service and day care.)
- 2 Pick-up service
- 3 Deliver meals to house
- 4 Respite Care Service



Services

- 5 Dementia care
- 6 Prevent or hold off frailty and dementia
- 7 Interface discharge preparation service
- 8 Holistic community care



05 What We did during intern

When we interned at
community nursing we also did
some long-term care services.



Pick-up Service



Measure Blood Sugar



Measure inbody and blood pressure



Group Exercise



Physical Fitness



Physical Fitness



Thanks for listening

